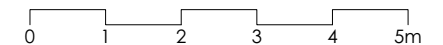
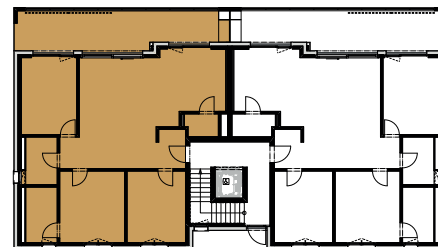
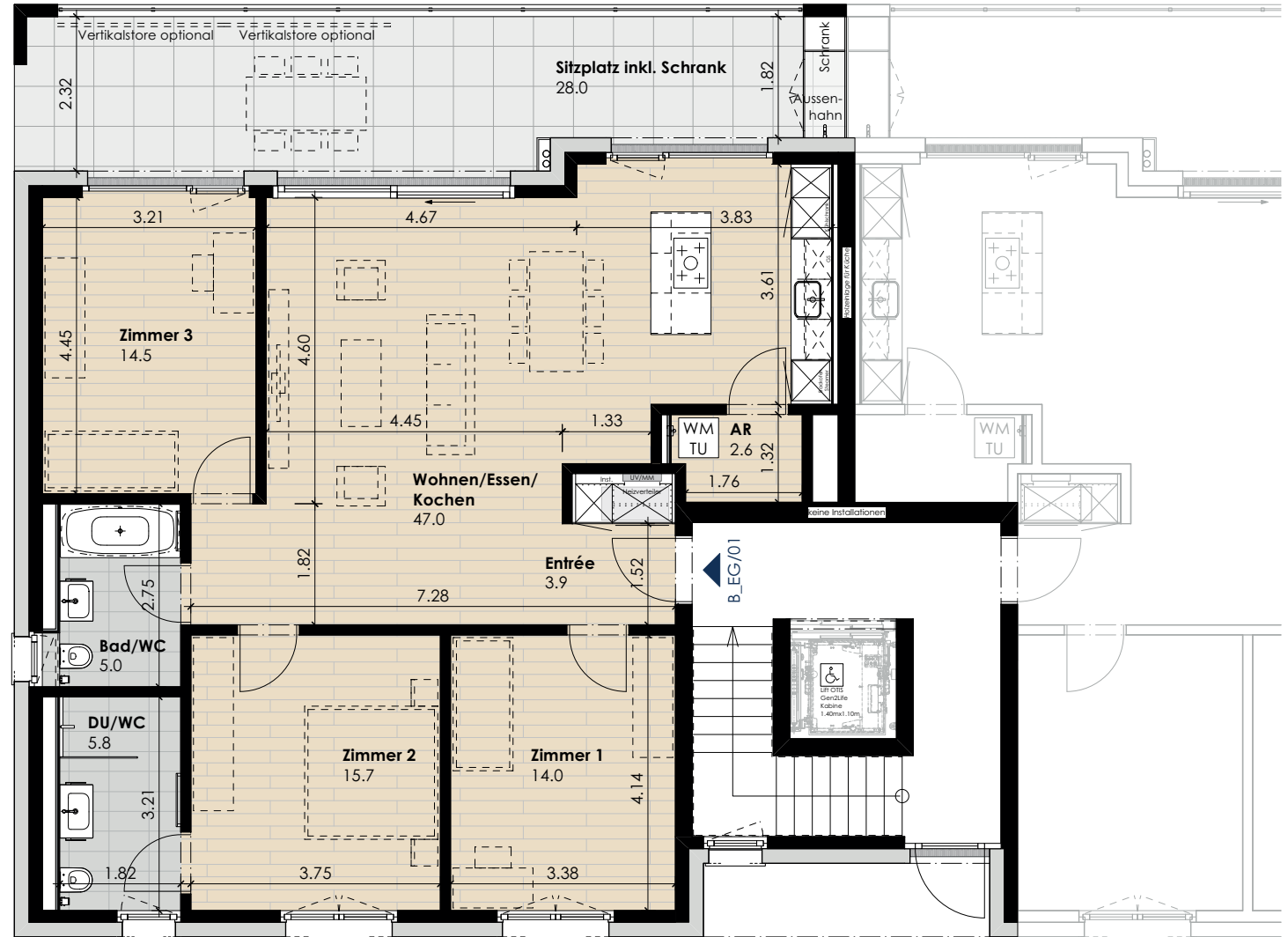


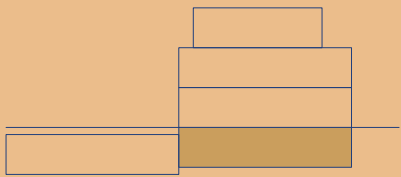
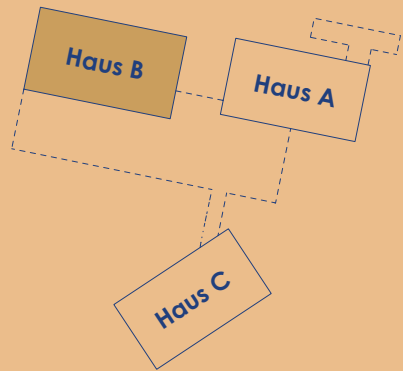
### Wohnung B\_EG/01 (Erdgeschoss)

Anzahl Zimmer	4.5
Wohnfläche (brutto)	114.30 m <sup>2</sup>
Wohnfläche (netto)	108.50 m <sup>2</sup>
Aussenbereich	28.00 m <sup>2</sup>
Keller	12.40 m <sup>2</sup>

17. November 2021

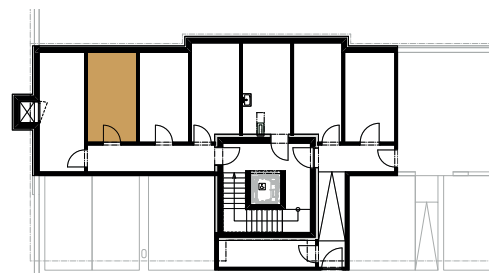
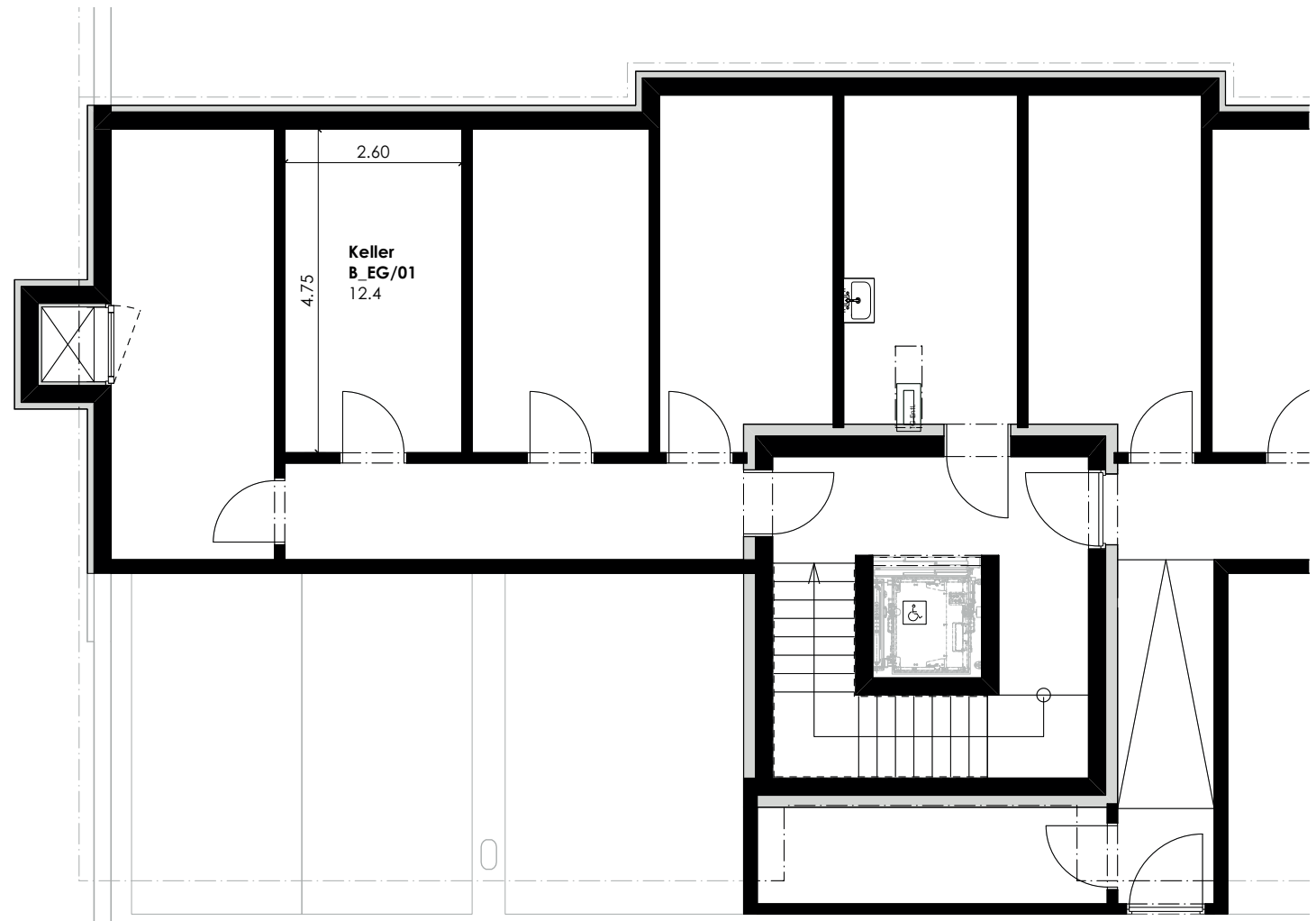


Massstab 1:100 (1cm = 1m)



### Wohnung B\_EG/01 (Erdgeschoss)

Anzahl Zimmer	4.5
Wohnfläche (brutto)	114.30 m <sup>2</sup>
Wohnfläche (netto)	108.50 m <sup>2</sup>
Aussenbereich	28.00 m <sup>2</sup>
Keller	12.40 m <sup>2</sup>



Masstab 1:100 (1cm = 1m)