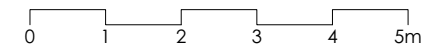
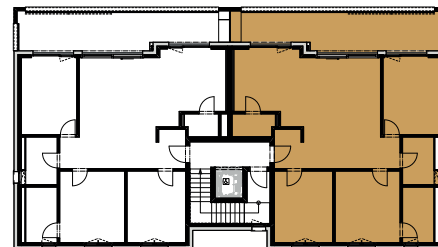
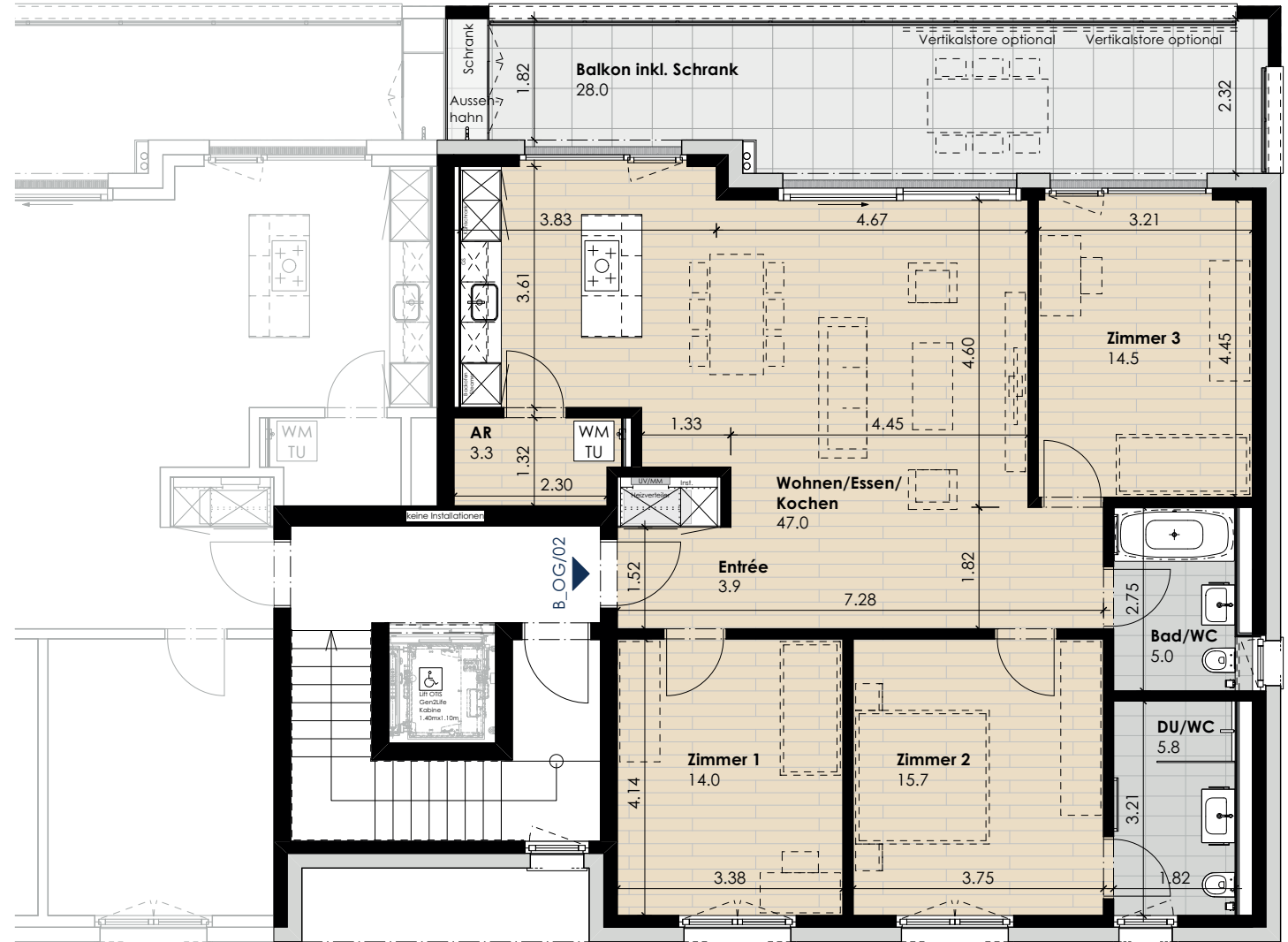


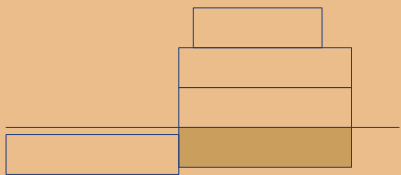
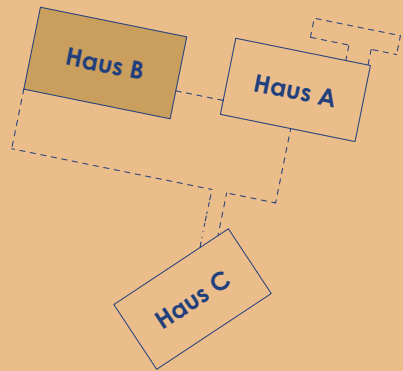
Wohnung B_OG/02 (Obergeschoss)

Anzahl Zimmer	4.5
Wohnfläche (brutto)	115.10 m ²
Wohnfläche (netto)	109.20 m ²
Aussenbereich	28.00 m ²
Keller	12.90 m ²

17. November 2021

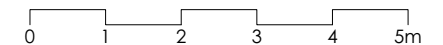
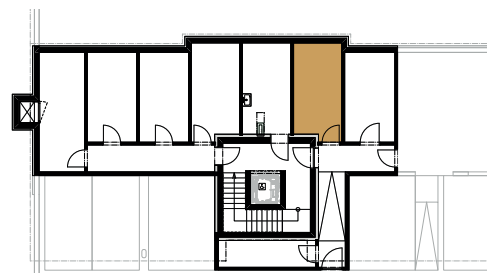
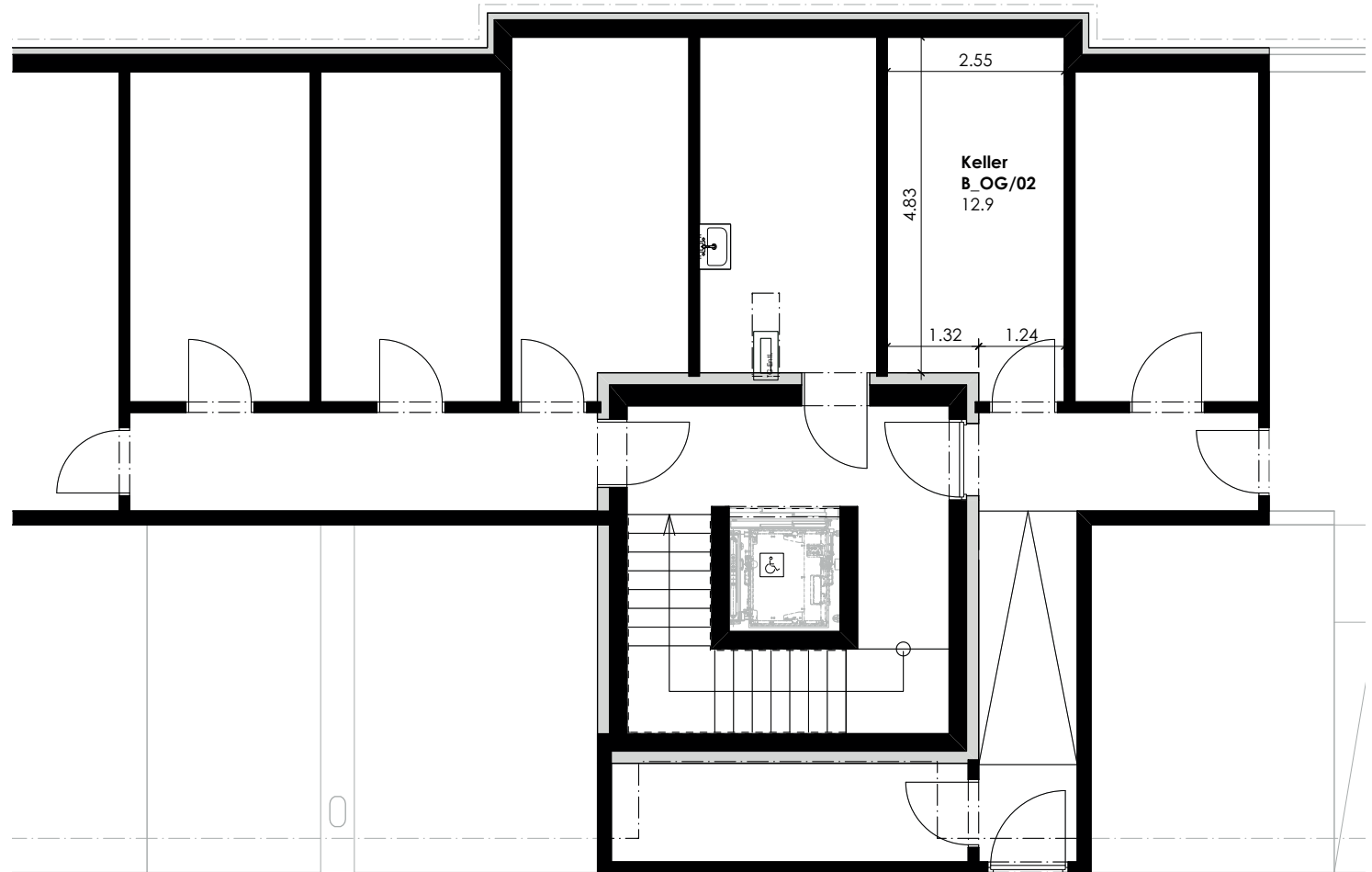


Masstab 1:100 (1cm = 1m)



Wohnung B_OG/02 (Obergeschoss)

Anzahl Zimmer	4.5
Wohnfläche (brutto)	115.10 m ²
Wohnfläche (netto)	109.20 m ²
Aussenbereich	28.00 m ²
Keller	12.90 m ²



Masstab 1:100 (1cm = 1m)