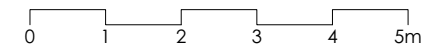
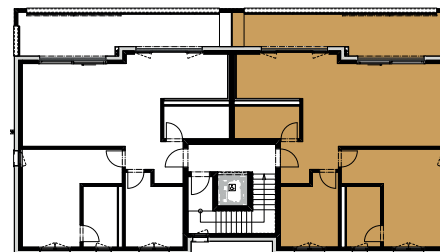
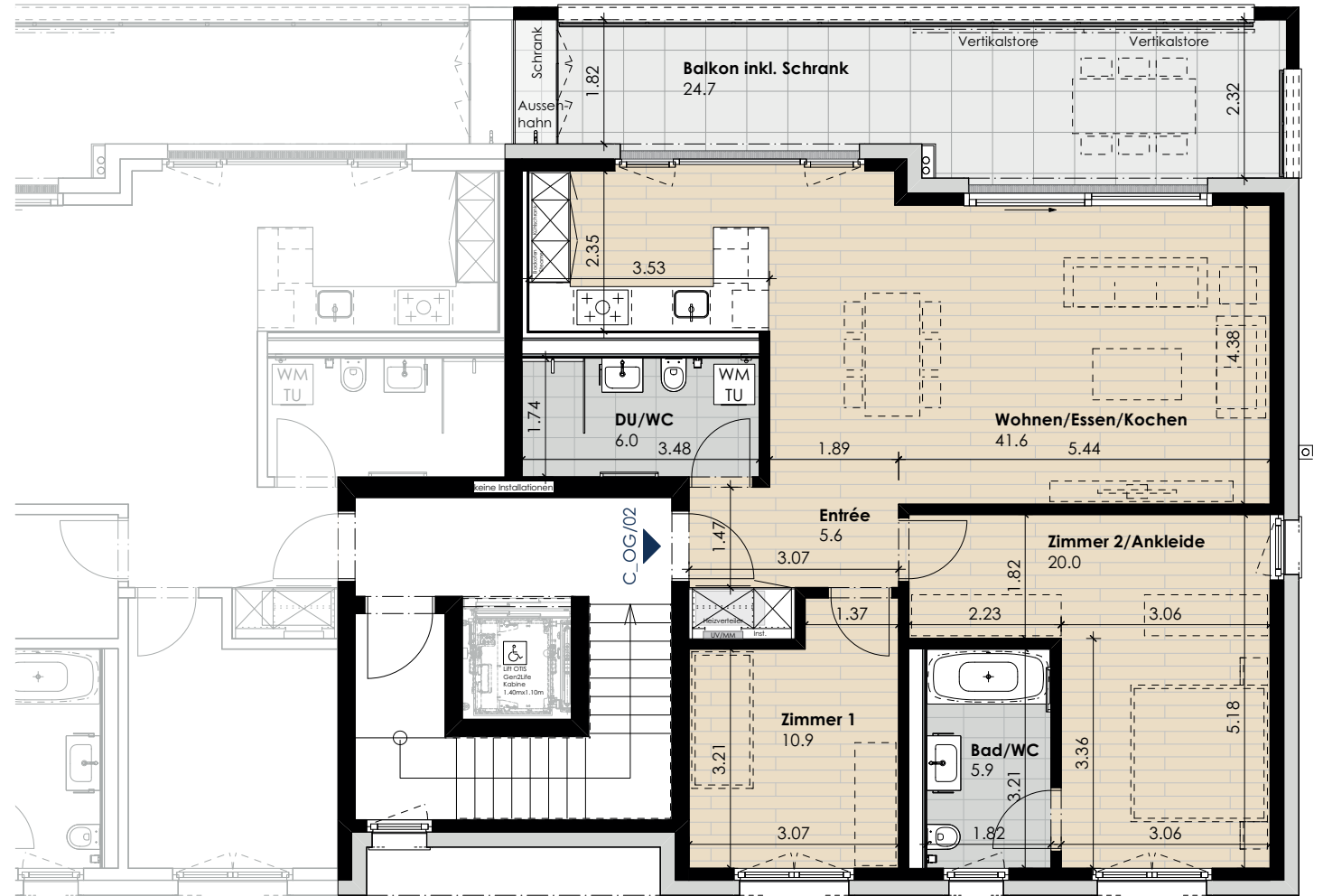


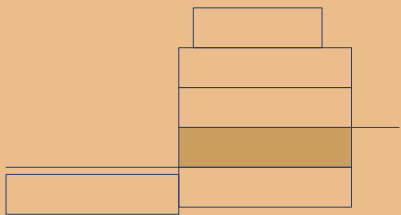
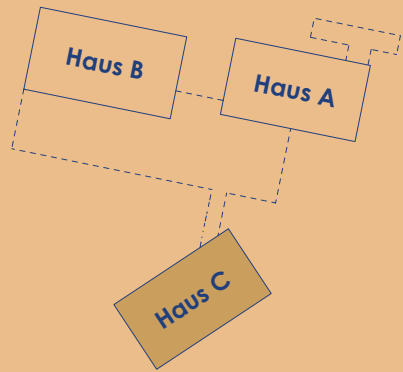
Wohnung C_OG/02 (Obergeschoss)

Anzahl Zimmer	3.5
Wohnfläche (brutto)	95.20 m ²
Wohnfläche (netto)	90.00 m ²
Aussenbereich	24.70 m ²
Keller	7.10 m ²

17. November 2021



Massstab 1:100 (1cm = 1m)



Wohnung C_OG/02 (Obergeschoss)

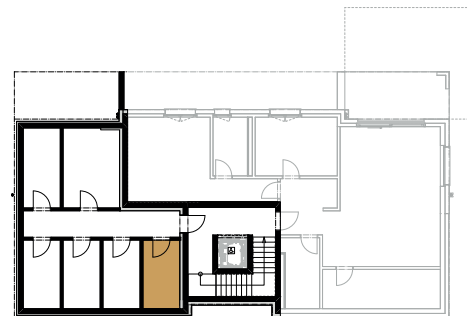
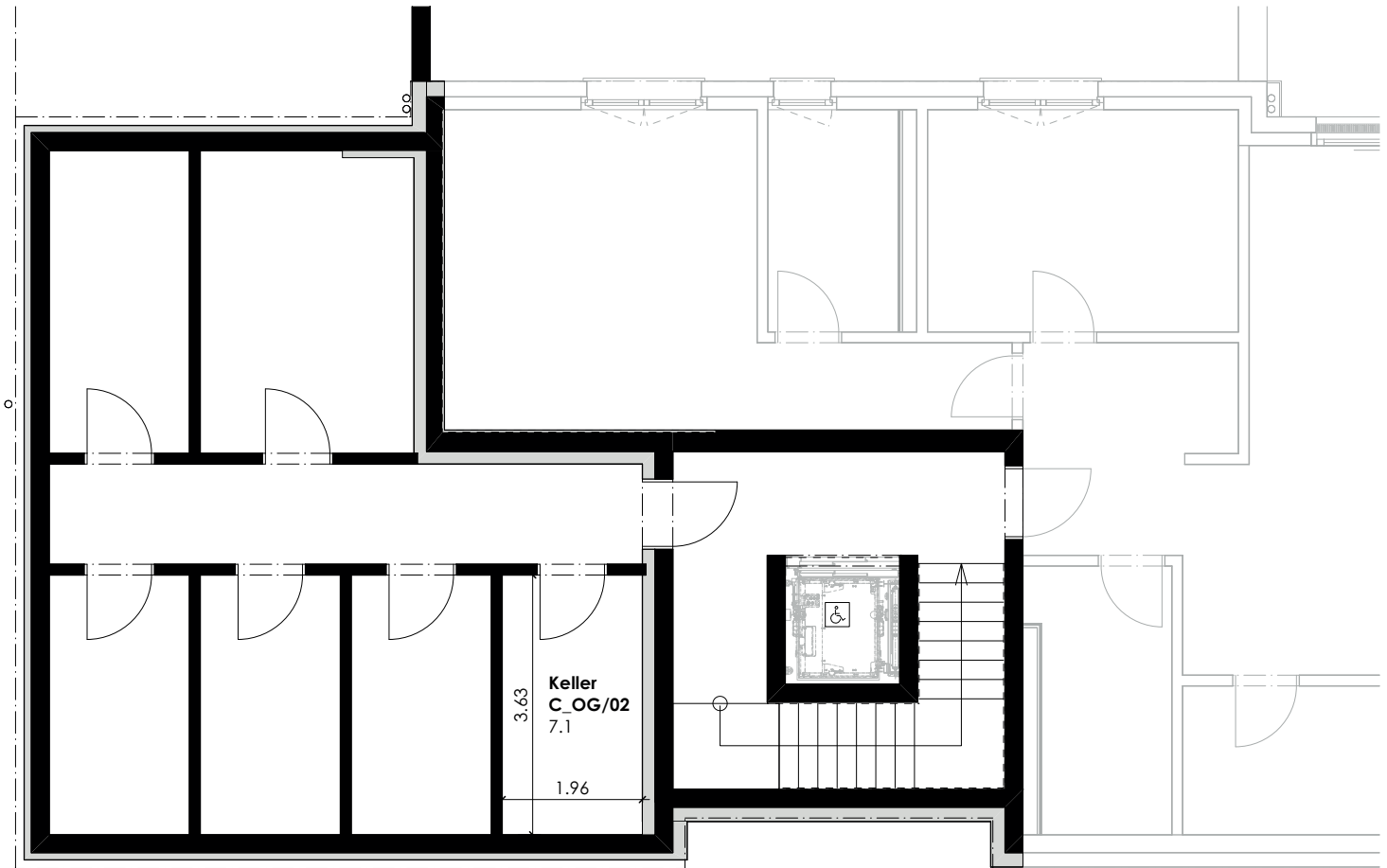
Anzahl Zimmer 3.5

Wohnfläche (brutto) 95.20 m²

Wohnfläche (netto) 90.00 m²

Aussenbereich 24.70 m²

Keller 7.10 m²



0 1 2 3 4 5m

Massstab 1:100 (1cm = 1m)